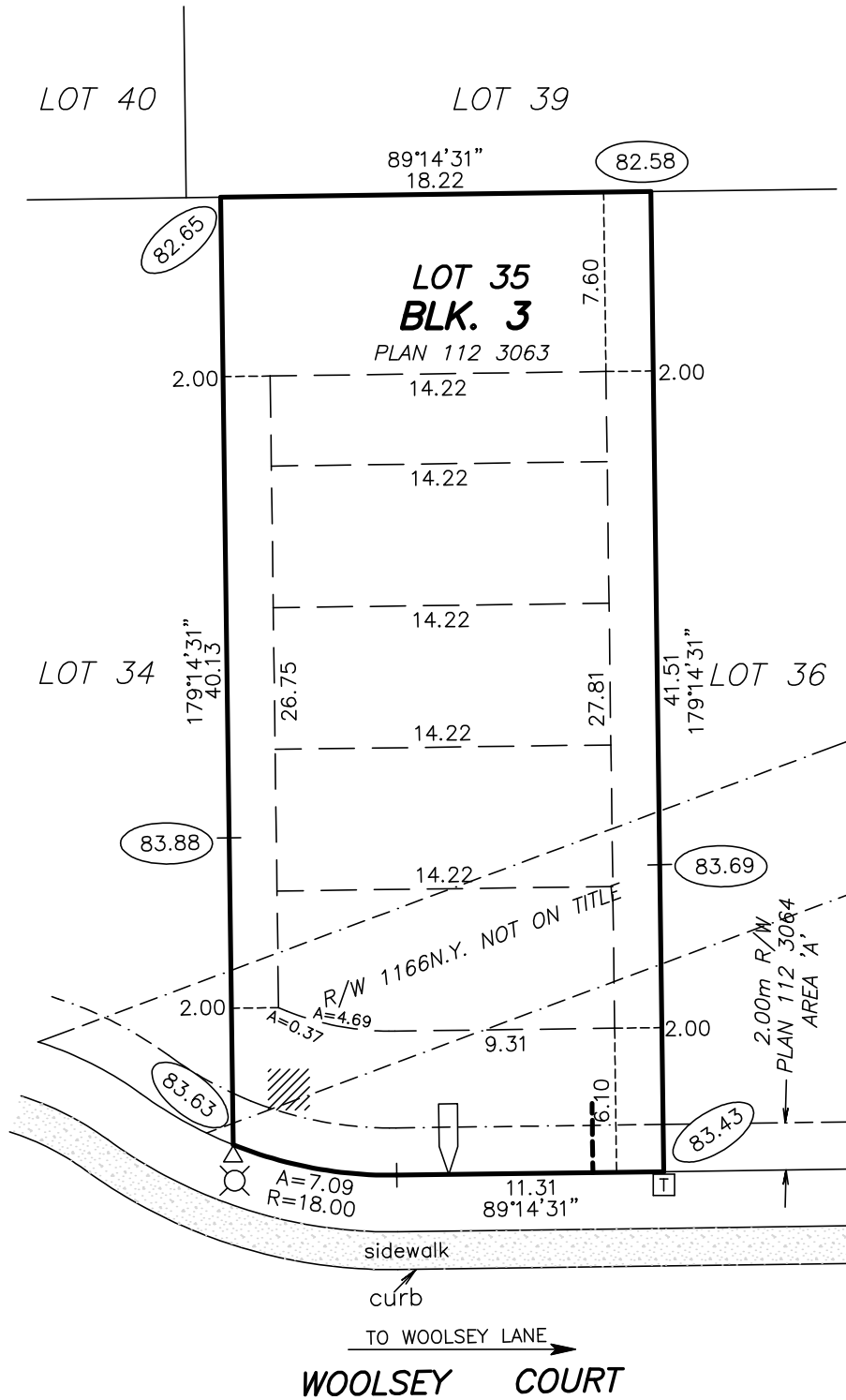


# BUILDING POCKET

HAGEN SURVEYS (1982) LTD.

ALBERTA LAND SURVEYORS  
8929 - 20 STREET  
EDMONTON ALBERTA T6P 1K8  
TELEPHONE: 464-5506



LOT 35	BLK. 3	PLAN 112 3063	SUBDIVISION RIVER POINTE STAGE 8	BUILDER OR OWNER -
-----------	-----------	------------------	--	-----------------------

SCALE: 1:300	JOB NO. 11C0481	DATE: JUNE 19, 2011	WOOLSEY COURT & WOOLSEY LANE ADDRESS EDMONTON
--------------	-----------------	---------------------	--

NOTES: -BUILDING POCKET WIDTHS ARE AT 6 METER INTERVALS. -ADDITIONAL SIDEYARDS MAY BE REQUIRED FOR HOUSES TALLER THAN TWO AND A HALF STOREYS AND FOR HOUSES FACING THE LONG SIDE OF A CORNER LOT. -EVERY EFFORT HAS BEEN MADE TO ENSURE THAT THE INFORMATION SHOWN HERE IS CORRECT. -ALL INFORMATION MUST BE VERIFIED PRIOR TO PREPARATION OF ANY SUBSEQUENT PLAN OR DOCUMENT -STREET FURNITURE AND SERVICES ARE DESIGNED BY OTHERS AND REVISIONS MAY BE MADE AT ANY TIME.  ALL DISTANCES ARE IN METRES AND DECIMALS THEREOF. ALL GRADES ARE IN METRES AND DECIMALS THEREOF. THIS PLAN IS SUBJECT TO APPROVAL OF LOCAL APPROVING AUTHORITY.	POWER CONNECTION		DATE	REVISIONS
		---	07/16/2011	2.0m side setback
	△			
	○			
	□			
	///			
	◁			
		DRAWN BY:	PING	
		CHECKED BY:	RAM	