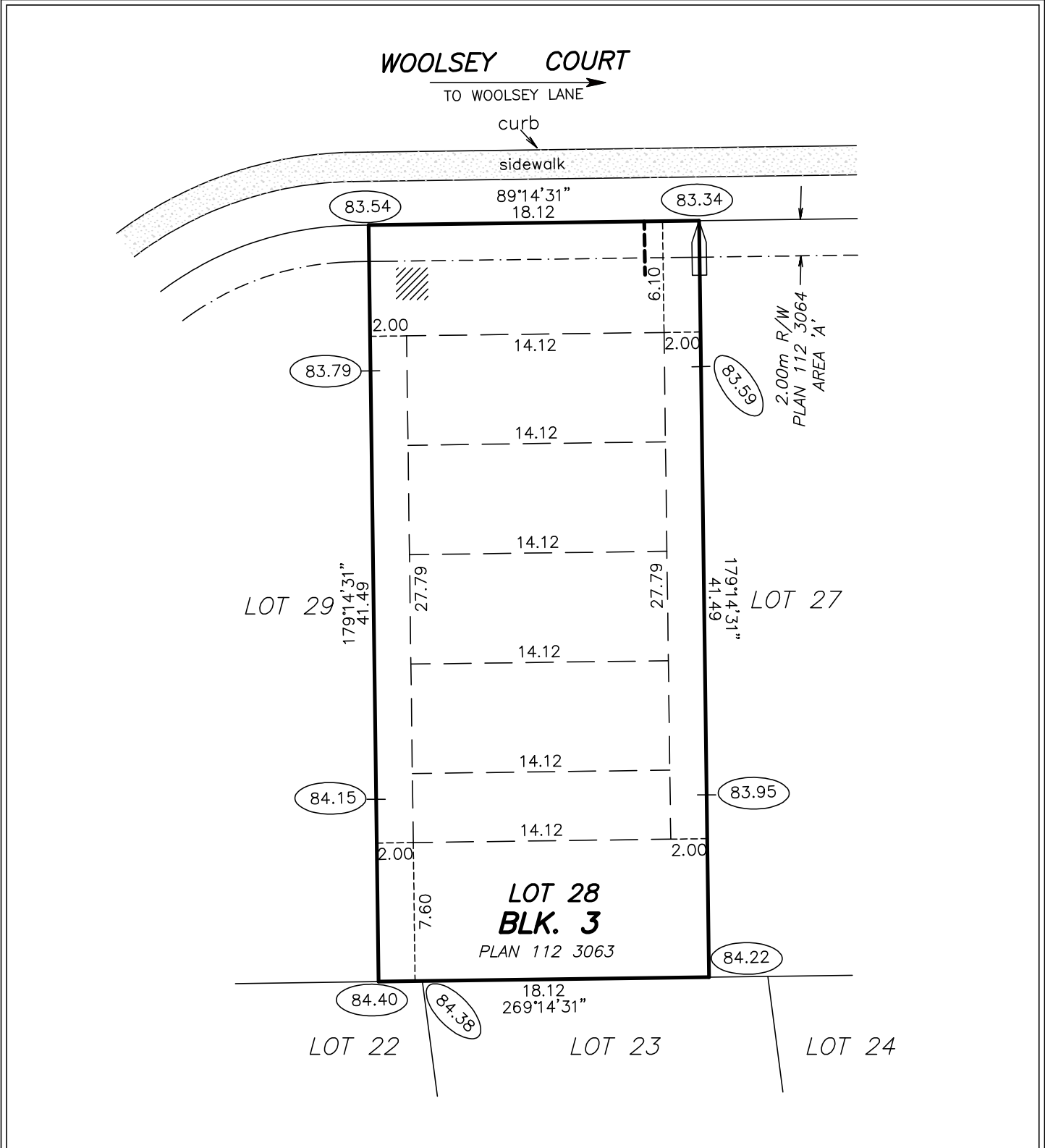


# BUILDING POCKET

HAGEN SURVEYS (1982) LTD.

ALBERTA LAND SURVEYORS  
8929 - 20 STREET  
EDMONTON ALBERTA T6P 1K8  
TELEPHONE: 464-5506



LOT 28	BLK. 3	PLAN 112 3063	SUBDIVISION RIVER POINTE STAGE 8	BUILDER OR OWNER -
-----------	-----------	------------------	--	-----------------------

SCALE: 1:300	JOB NO. 11C0481	DATE: JUNE 19, 2011	WOOLSEY COURT & WOOLSEY LANE ADDRESS EDMONTON
--------------	-----------------	---------------------	--

<p>NOTES:</p> <ul style="list-style-type: none"> <li>-BUILDING POCKET WIDTHS ARE AT 6 METER INTERVALS.</li> <li>-ADDITIONAL SIDEYARDS MAY BE REQUIRED FOR HOUSES TALLER THAN TWO AND A HALF STOREYS AND FOR HOUSES FACING THE LONG SIDE OF A CORNER LOT.</li> <li>-EVERY EFFORT HAS BEEN MADE TO ENSURE THAT THE INFORMATION SHOWN HERE IS CORRECT.</li> <li>-ALL INFORMATION MUST BE VERIFIED PRIOR TO PREPARATION OF ANY SUBSEQUENT PLAN OR DOCUMENT</li> <li>-STREET FURNITURE AND SERVICES ARE DESIGNED BY OTHERS AND REVISIONS MAY BE MADE AT ANY TIME.</li> </ul> <p>ALL DISTANCES ARE IN METRES AND DECIMALS THEREOF. ALL GRADES ARE IN METRES AND DECIMALS THEREOF. THIS PLAN IS SUBJECT TO APPROVAL OF LOCAL APPROVING AUTHORITY.</p>	<p>POWER CONNECTION </p> <p>SERVICE PEDESTAL </p> <p>STREET LIGHT </p> <p>C.C. </p> <p>TRANSFORMER </p> <p>DRIVEWAY LOCATIONS </p> <p>WATER SERVICE LOCATION </p>	DATE	REVISIONS	
			07/16/2011	2.0m side setback
		DRAWN BY:	PING	
		CHECKED BY:	RAM	