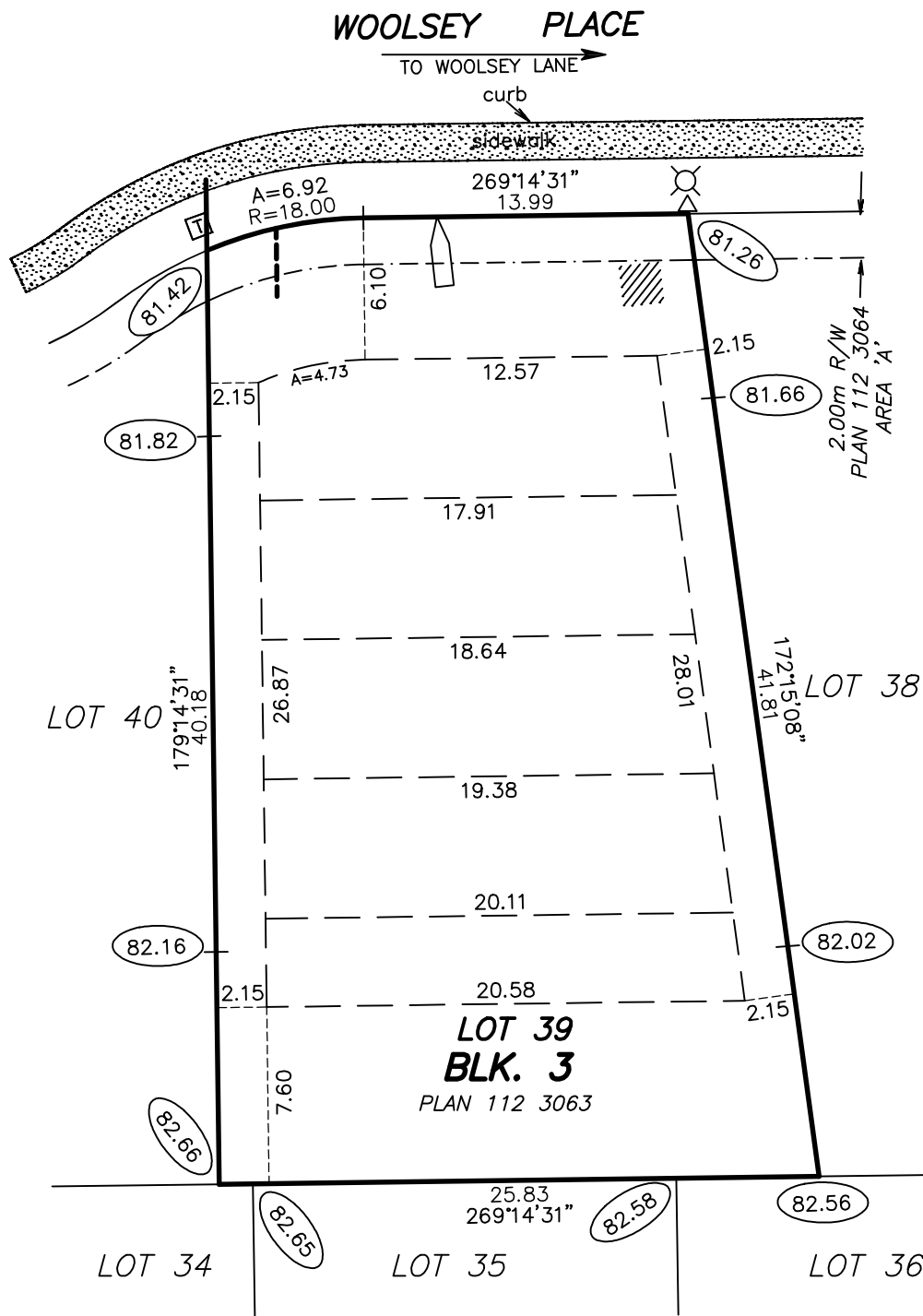


BUILDING POCKET

HAGEN SURVEYS (1982) LTD.

ALBERTA LAND SURVEYORS
8929 - 20 STREET
EDMONTON ALBERTA T6P 1K8
TELEPHONE: 464-5506



| | | | | |
|--------------|-----------|------------------|--|--|
| LOT 39 | BLK. 3 | PLAN 112 3063 | SUBDIVISION RIVER POINTE STAGE 8 | BUILDER OR OWNER - |
| SCALE: 1:300 | | JOB NO. 11C0481 | DATE: JUNE 19, 2011 | 5005 - WOOLSEY PLACE, NW ADDRESS EDMONTON |

NOTES:

- BUILDING POCKET WIDTHS ARE AT 6 METER INTERVALS.
- ADDITIONAL SIDEYARDS MAY BE REQUIRED FOR HOUSES TALLER THAN TWO AND A HALF STOREYS AND FOR HOUSES FACING THE LONG SIDE OF A CORNER LOT.
- EVERY EFFORT HAS BEEN MADE TO ENSURE THAT THE INFORMATION SHOWN HERE IS CORRECT.
- ALL INFORMATION MUST BE VERIFIED PRIOR TO PREPARATION OF ANY SUBSEQUENT PLAN OR DOCUMENT
- STREET FURNITURE AND SERVICES ARE DESIGNED BY OTHERS AND REVISIONS MAY BE MADE AT ANY TIME.

ALL DISTANCES ARE IN METRES AND DECIMALS THEREOF.
ALL GRADES ARE IN METRES AND DECIMALS THEREOF.
THIS PLAN IS SUBJECT TO APPROVAL OF LOCAL APPROVING AUTHORITY.

- POWER CONNECTION
- SERVICE PEDESTAL
- STREET LIGHT
- C.C.
- TRANSFORMER
- DRIVEWAY LOCATIONS
- WATER SERVICE LOCATION

| DATE | REVISIONS |
|------------------|--------------------|
| 07/16/2011 | 2.0m side setback |
| 07/20/2017 (ESD) | 2.15m side setback |
| | |
| | |
| | |
| DRAWN BY: | PING |
| CHECKED BY: | RAM |