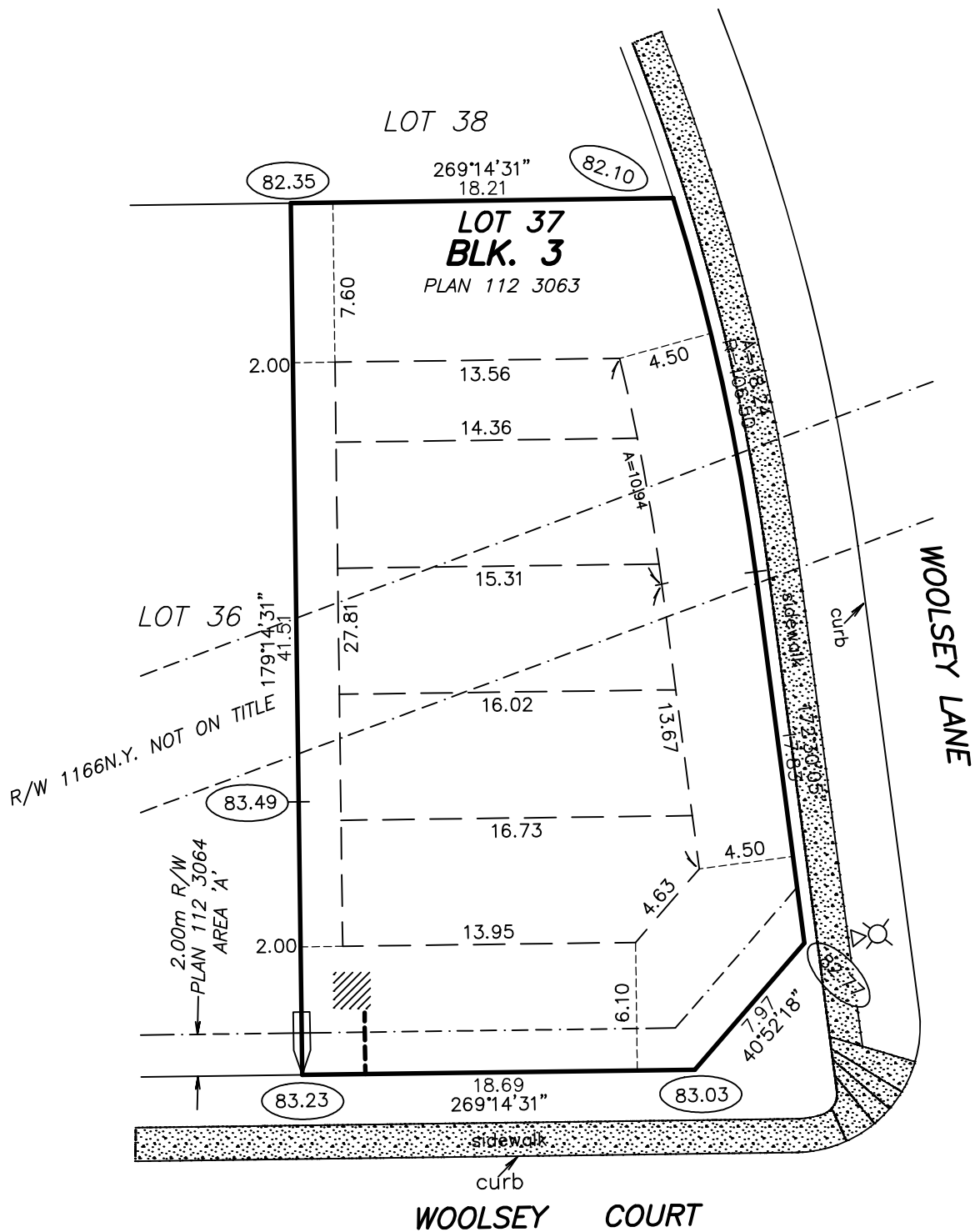


BUILDING POCKET

HAGEN SURVEYS (1982) LTD.

ALBERTA LAND SURVEYORS
8929 - 20 STREET
EDMONTON ALBERTA T6P 1K8
TELEPHONE: 464-5506



LOT 37	BLK. 3	PLAN 112 3063	SUBDIVISION RIVER POINTE STAGE 8	BUILDER OR OWNER -
SCALE: 1:300		JOB NO. 11C0481	DATE: JUNE 19, 2011	4904 - WOOLSEY COURT, NW ADDRESS EDMONTON

NOTES:

- BUILDING POCKET WIDTHS ARE AT 6 METER INTERVALS.
- ADDITIONAL SIDEYARDS MAY BE REQUIRED FOR HOUSES TALLER THAN TWO AND A HALF STOREYS AND FOR HOUSES FACING THE LONG SIDE OF A CORNER LOT.
- EVERY EFFORT HAS BEEN MADE TO ENSURE THAT THE INFORMATION SHOWN HERE IS CORRECT.
- ALL INFORMATION MUST BE VERIFIED PRIOR TO PREPARATION OF ANY SUBSEQUENT PLAN OR DOCUMENT
- STREET FURNITURE AND SERVICES ARE DESIGNED BY OTHERS AND REVISIONS MAY BE MADE AT ANY TIME.

ALL DISTANCES ARE IN METRES AND DECIMALS THEREOF.
ALL GRADES ARE IN METRES AND DECIMALS THEREOF.
THIS PLAN IS SUBJECT TO APPROVAL OF LOCAL APPROVING AUTHORITY.

- POWER CONNECTION
- SERVICE PEDESTAL
- STREET LIGHT
- C.C.
- TRANSFORMER
- DRIVEWAY LOCATIONS
- WATER SERVICE LOCATION

DATE	REVISIONS
07/16/2011	2.0m side setback
07/20/2017 (ESD)	7.6m rear setback
DRAWN BY:	PING
CHECKED BY:	RAM