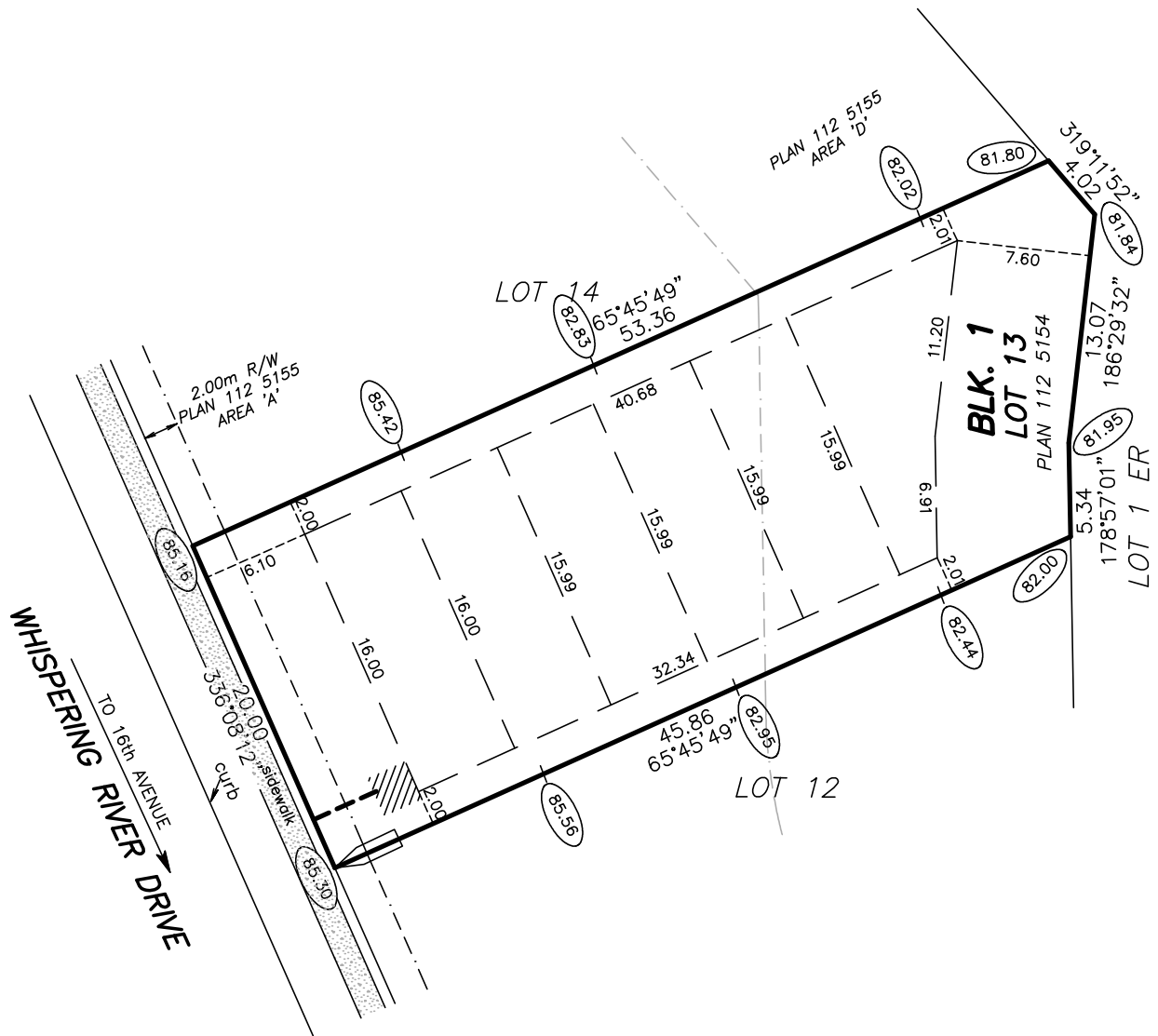


BUILDING POCKET

HAGEN SURVEYS (1982) LTD.

ALBERTA LAND SURVEYORS
8929 - 20 STREET
EDMONTON ALBERTA T6P 1K8
TELEPHONE: 464-5506



LOT 13	BLK. 1	PLAN 112 5154	SUBDIVISION RIVER POINTE STAGE 17	BUILDER OR OWNER -	
SCALE: 1:400		JOB NO. 11C0481	DATE: DECEMBER 16, 2011	WHISPERING RIVER DRIVE ADDRESS EDMONTON	
<p>NOTES:</p> <ul style="list-style-type: none"> -BUILDING POCKET WIDTHS ARE AT 6 METER INTERVALS. -ADDITIONAL SIDEYARDS MAY BE REQUIRED FOR HOUSES TALLER THAN TWO AND A HALF STOREYS AND FOR HOUSES FACING THE LONG SIDE OF A CORNER LOT. -EVERY EFFORT HAS BEEN MADE TO ENSURE THAT THE INFORMATION SHOWN HERE IS CORRECT. -ALL INFORMATION MUST BE VERIFIED PRIOR TO PREPARATION OF ANY SUBSEQUENT PLAN OR DOCUMENT -STREET FURNITURE AND SERVICES ARE DESIGNED BY OTHERS AND REVISIONS MAY BE MADE AT ANY TIME. <p>ALL DISTANCES ARE IN METRES AND DECIMALS THEREOF. ALL GRADES ARE IN METRES AND DECIMALS THEREOF. THIS PLAN IS SUBJECT TO APPROVAL OF LOCAL APPROVING AUTHORITY.</p>				DATE	REVISIONS
				<p>POWER CONNECTION ---</p> <p>SERVICE PEDESTAL \triangle</p> <p>STREET LIGHT \odot</p> <p>C.C. \circ</p> <p>TRANSFORMER \square</p> <p>DRIVEWAY LOCATIONS \parallel</p> <p>WATER SERVICE LOCATION \leftarrow</p>	DRAWN BY: PING