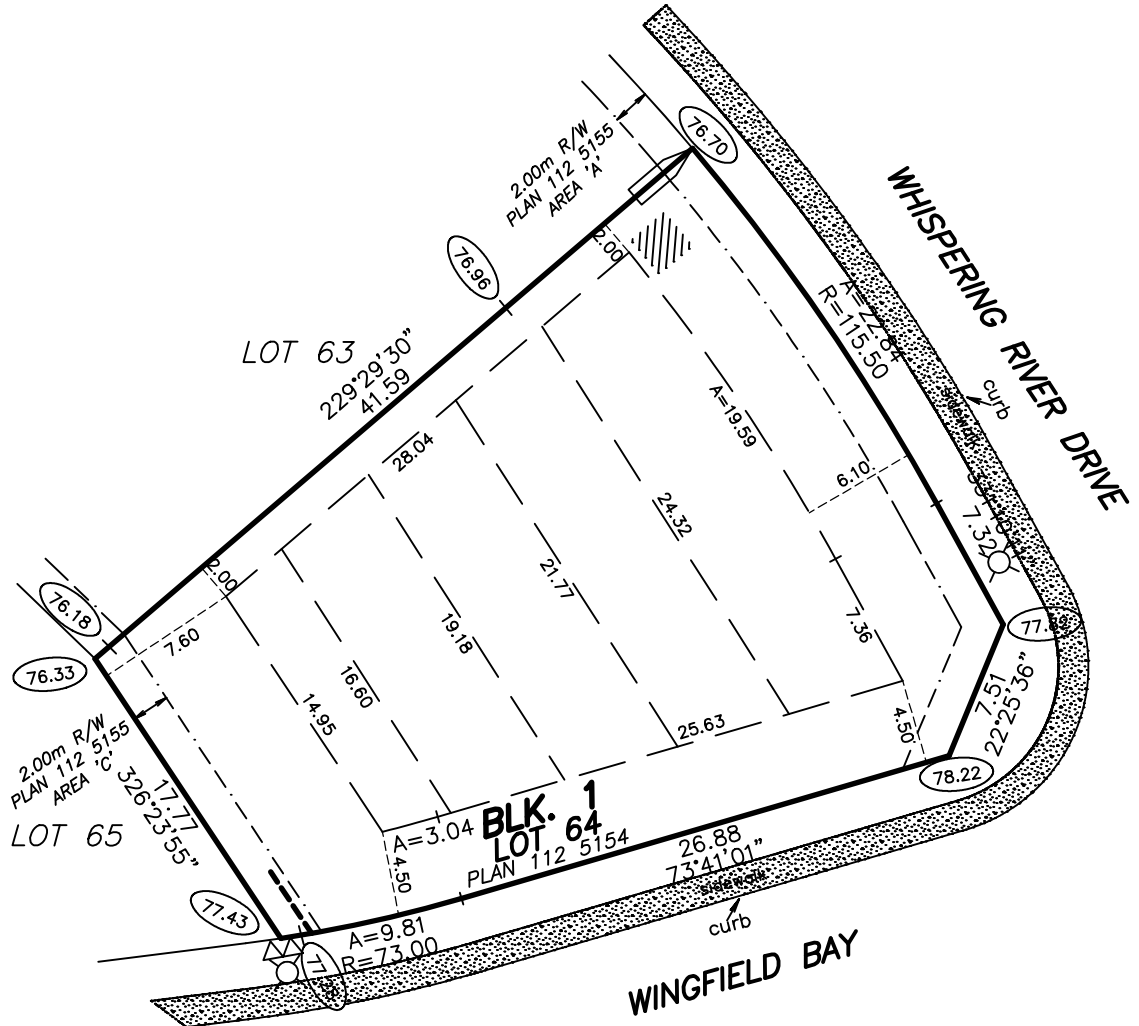


BUILDING POCKET

HAGEN SURVEYS (1982) LTD.

ALBERTA LAND SURVEYORS
8929 - 20 STREET
EDMONTON ALBERTA T6P 1K8
TELEPHONE: 464-5506



LOT 64	BLK. 1	PLAN 112 5154	SUBDIVISION RIVER POINTE STAGE 17	BUILDER OR OWNER -
-----------	-----------	------------------	---	-----------------------

SCALE: 1:400	JOB NO.: 11C0481	DATE: DECEMBER 16, 2011	4140 - WHISPERING RIVER DRIVE, NW EDMONTON
--------------	------------------	-------------------------	---

<p>NOTES:</p> <ul style="list-style-type: none"> -BUILDING POCKET WIDTHS ARE AT 6 METER INTERVALS. -ADDITIONAL SIDEYARDS MAY BE REQUIRED FOR HOUSES TALLER THAN TWO AND A HALF STOREYS AND FOR HOUSES FACING THE LONG SIDE OF A CORNER LOT. -EVERY EFFORT HAS BEEN MADE TO ENSURE THAT THE INFORMATION SHOWN HERE IS CORRECT. -ALL INFORMATION MUST BE VERIFIED PRIOR TO PREPARATION OF ANY SUBSEQUENT PLAN OR DOCUMENT -STREET FURNITURE AND SERVICES ARE DESIGNED BY OTHERS AND REVISIONS MAY BE MADE AT ANY TIME. <p>ALL DISTANCES ARE IN METRES AND DECIMALS THEREOF. ALL GRADES ARE IN METRES AND DECIMALS THEREOF. THIS PLAN IS SUBJECT TO APPROVAL OF LOCAL APPROVING AUTHORITY.</p>	<p>POWER CONNECTION</p> <p>SERVICE PEDESTAL</p> <p>STREET LIGHT</p> <p>C.C.</p> <p>TRANSFORMER</p> <p>DRIVEWAY LOCATIONS</p> <p>WATER SERVICE LOCATION</p>	DATE	REVISIONS
		07/25/2017 (ESD)	7.60m rear setback
		DRAWN BY:	PING
CHECKED BY:	RAM		