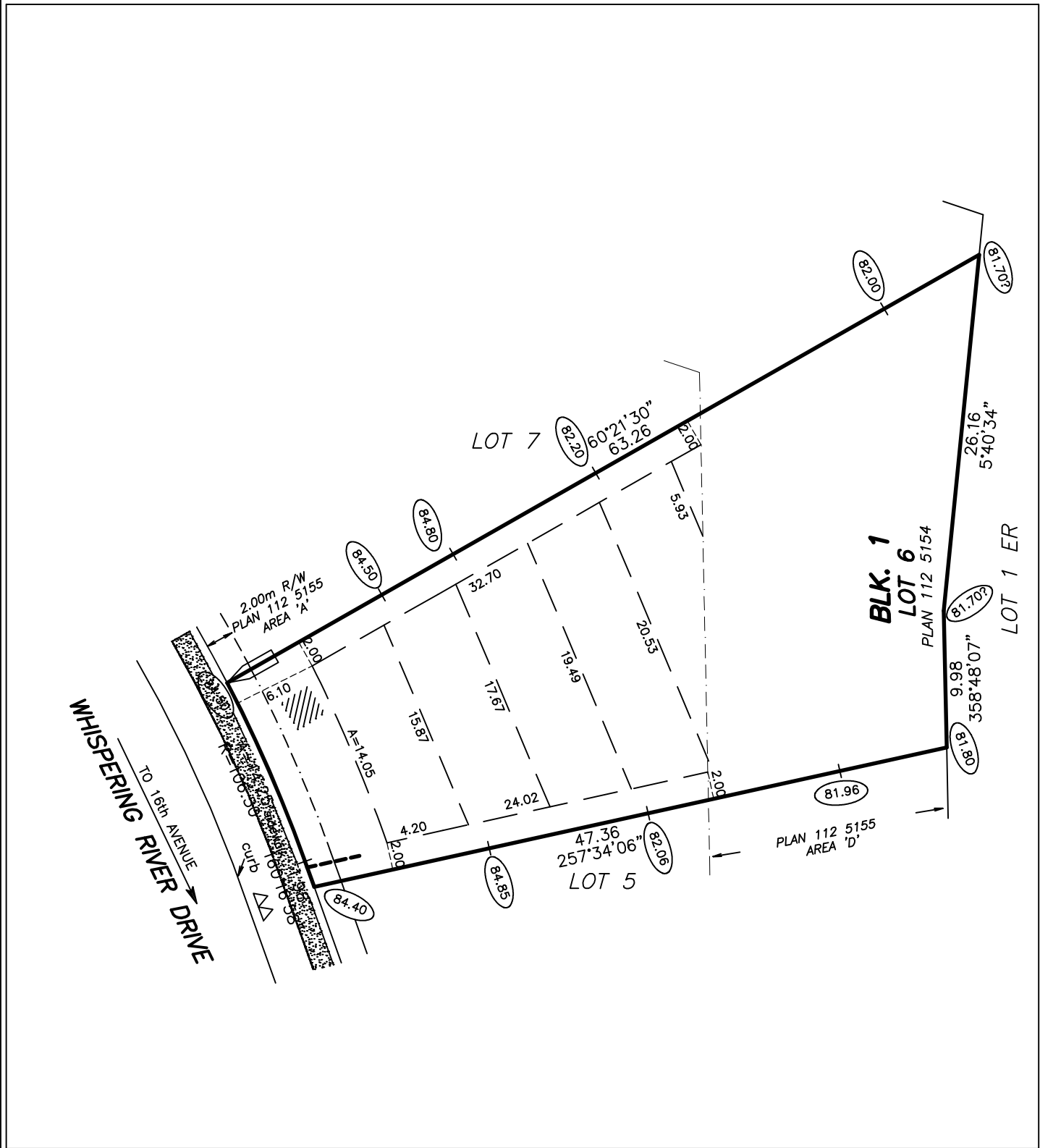


# BUILDING POCKET

HAGEN SURVEYS (1982) LTD.

ALBERTA LAND SURVEYORS  
8929 - 20 STREET  
EDMONTON ALBERTA T6P 1K8  
TELEPHONE: 464-5506



LOT 6	BLK. 1	PLAN 112 5154	SUBDIVISION RIVER POINTE STAGE 17	BUILDER OR OWNER -
----------	-----------	------------------	---	-----------------------

SCALE: 1:400	JOB NO. 11C0481	DATE: DECEMBER 16, 2011	4083 - WHISPERING RIVER DRIVE NW EDMONTON
--------------	-----------------	-------------------------	--

NOTES:

- BUILDING POCKET WIDTHS ARE AT 6 METER INTERVALS.
- ADDITIONAL SIDEYARDS MAY BE REQUIRED FOR HOUSES TALLER THAN TWO AND A HALF STOREYS AND FOR HOUSES FACING THE LONG SIDE OF A CORNER LOT.
- EVERY EFFORT HAS BEEN MADE TO ENSURE THAT THE INFORMATION SHOWN HERE IS CORRECT.
- ALL INFORMATION MUST BE VERIFIED PRIOR TO PREPARATION OF ANY SUBSEQUENT PLAN OR DOCUMENT
- STREET FURNITURE AND SERVICES ARE DESIGNED BY OTHERS AND REVISIONS MAY BE MADE AT ANY TIME.

ALL DISTANCES ARE IN METRES AND DECIMALS THEREOF.  
ALL GRADES ARE IN METRES AND DECIMALS THEREOF.  
THIS PLAN IS SUBJECT TO APPROVAL OF LOCAL APPROVING AUTHORITY.

POWER CONNECTION

SERVICE PEDESTAL

STREET LIGHT

C.C.

TRANSFORMER

DRIVEWAY LOCATIONS

WATER SERVICE LOCATION

DATE	REVISIONS
07/20/2017 (ESD)	2.0m side setback
DRAWN BY:	PING
CHECKED BY:	RAM